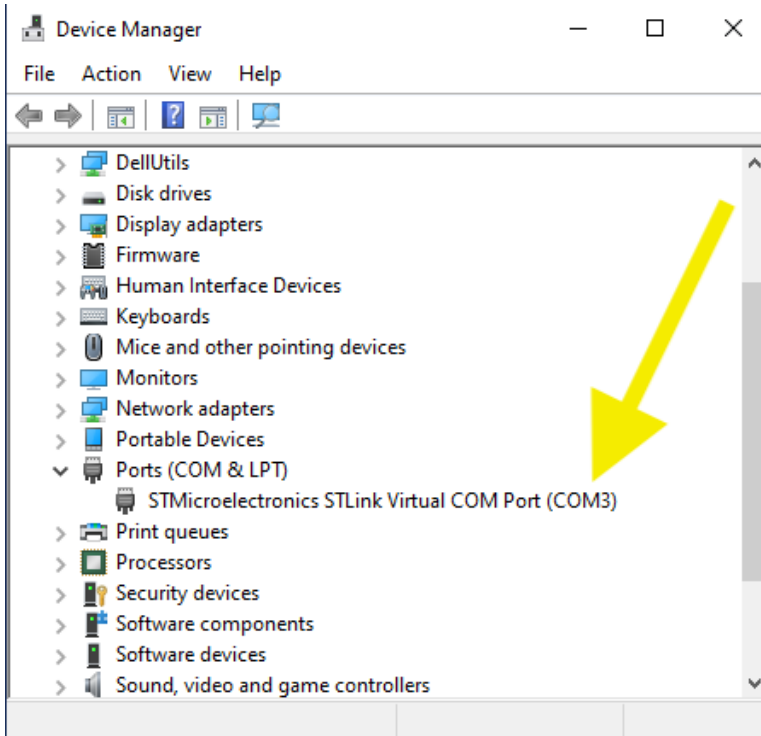
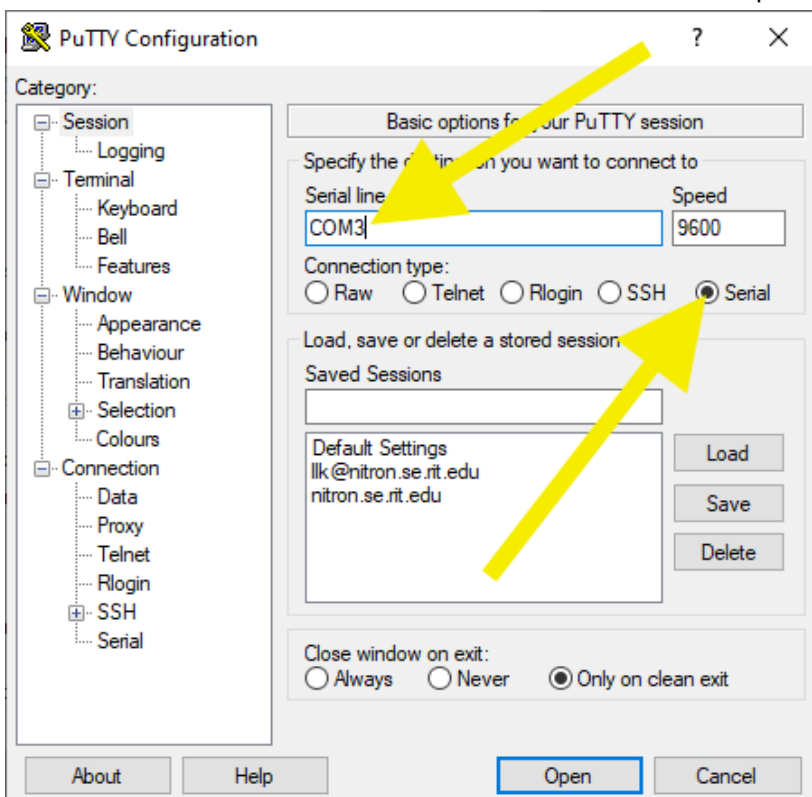


# Finding the Virtual UART Port

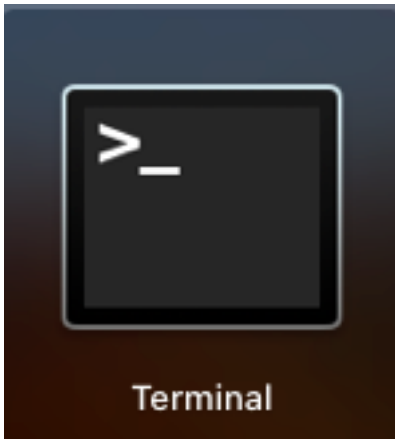
For a PC open the Device Manager and then open the COM ports. Determine the virtual COM port number.



Use the COM port from Device Manager with PuTTY or any other serial terminal utility program. If using PuTTY switch from the SSH tab to the terminal tab. Note that this virtual COM port will change in an unpredictable manner.



**For a Mac** open a Terminal.



In that Terminal window enter the following and then use one of the two modem devices in the screen statement (note that the device will arbitrarily change between sessions):

```
% ls /dev/*modem*  
/dev/cu.usbmodem14103    /dev/tty.usbmodem14103  
% screen /dev/tty.usbmodem14103
```

This will give you a blank screen or whatever text is being sent by your microcontroller board to USART2.

To exit the screen utility, enter Control-a followed by Control-\ then respond with a letter y to the prompt.

Larry Kiser