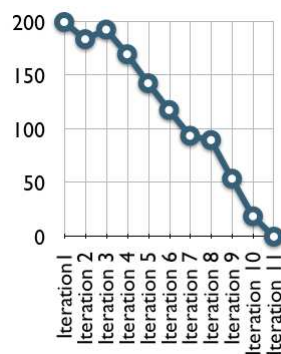


Scrum Burndown Charts

Burndown Charts

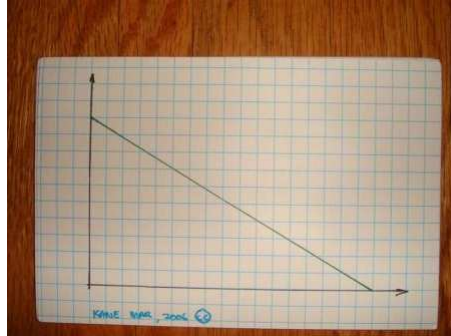


Sprint Burndown
(hours / sprint days)



Release Burndown
(story points / iteration)

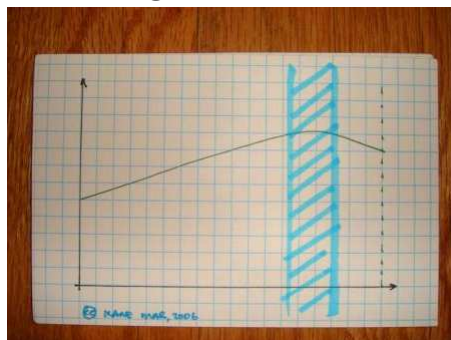
Burndown Signatures - "Fakey-Fakey"



- Fear of reporting actual status
- Senior Project presentations

Reference: <http://kanemaru.com/2006/11/07/seven-common-sprint-burndown-graph-signatures/>

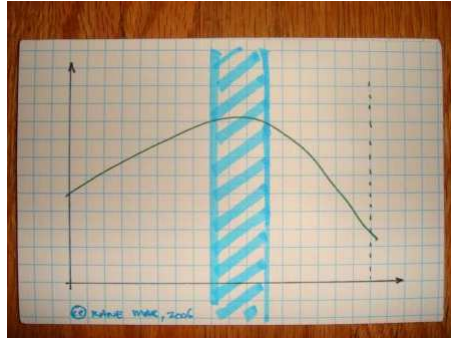
Burndown Signatures – Late Learner



- Blue is "learning hump"
- New teams being unable to define "done"
- Learn late that testing is important

Reference: <http://kanemaru.com/2006/11/07/seven-common-sprint-burndown-graph-signatures/>

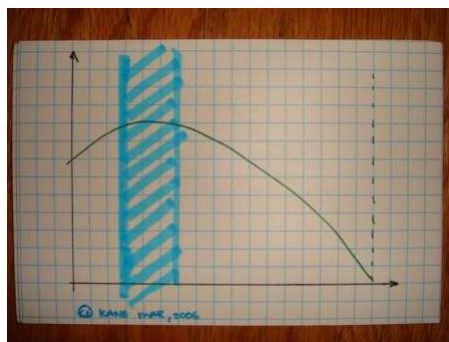
Burndown Signatures – Middle Learner



- Maturing teams perform discovery earlier
- Moves learning help to middle of sprint

Reference: <http://kanemar.com/2006/11/07/seven-common-sprint-burndown-graph-signatures/>

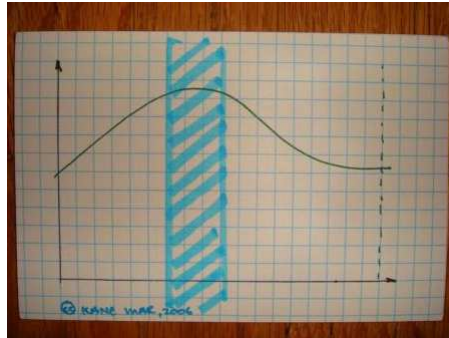
Burndown Signatures – Early Learner



- Team have better understanding of what need to be accomplished in a sprint
- Typically have a better handle on testing

Reference: <http://kanemar.com/2006/11/07/seven-common-sprint-burndown-graph-signatures/>

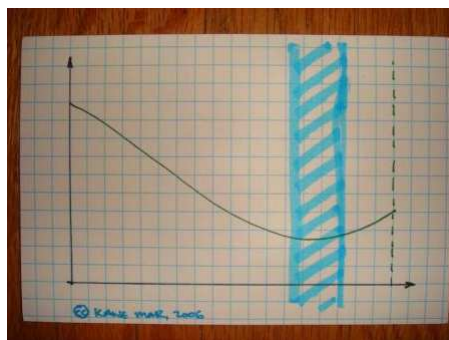
Burndown Signatures – Plateau



- Teams between early and late learners
- Good progress, but can't carry through

Reference: <http://kanemar.com/2006/11/07/seven-common-sprint-burndown-graph-signatures/>

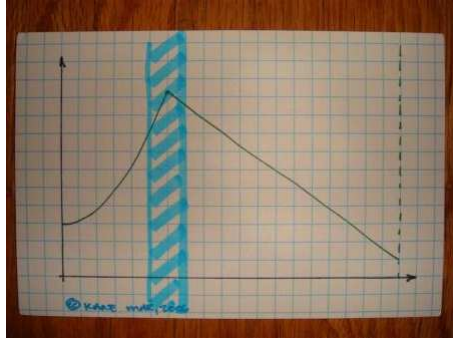
Burndown Signatures: Never-Never



- Late sprint surprises
- More discovery or scope change?
- Analyze in reflection

Reference: <http://kanemar.com/2006/11/07/seven-common-sprint-burndown-graph-signatures/>

Burndown Signatures: Scope Change



- Scope of work committed to not understood
- Negotiate with product owner
- Terminate sprint, re-plan

Reference: <http://kanemar.com/2006/11/07/seven-common-sprint-burndown-graph-signatures/>