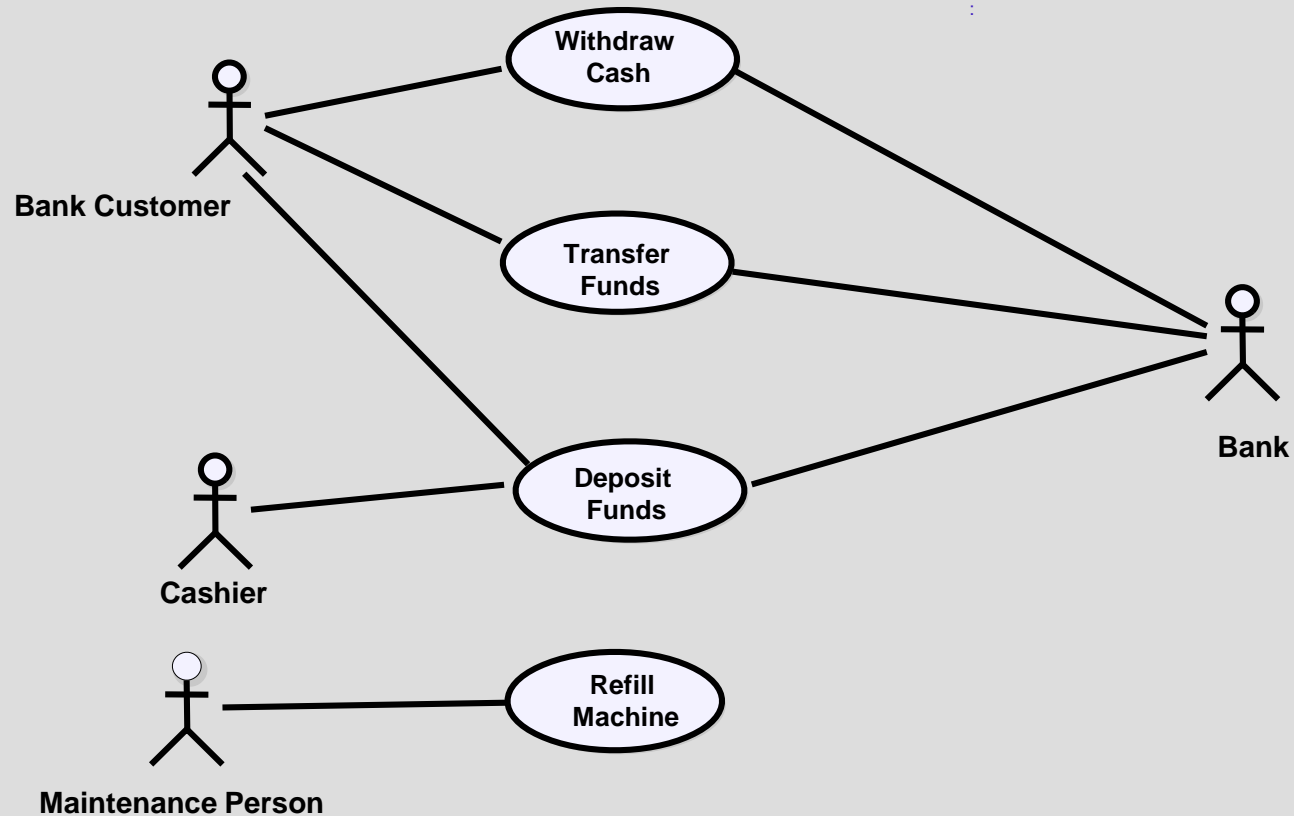


ATM Analysis Models

Use Case Example - ATM



ATM Model: Withdraw Cash Use Case

1 Brief Description

This use case describes how the Bank Customer uses the ATM to withdraw money his/her bank account.

2 Actors

- 2.1 Bank Customer
- 2.2 Bank

3 Preconditions

There is an active network connection to the Bank.
The ATM has cash available.

4 Basic Flow of Events

1. The use case begins when Bank Customer inserts their Bank Card.
2. Use Case: Validate User is performed.
3. The ATM displays the different alternatives that are available on this unit. [See Supporting Requirement SR-xxx for list of alternatives]. In this case the Bank Customer always selects “Withdraw Cash”.
4. The ATM prompts for an account. See Supporting Requirement SR-yyy for account types that shall be supported.
5. The Bank Customer selects an account.
6. The ATM prompts for an amount.
7. The Bank Customer enters an amount.
8. Card ID, PIN, amount and account is sent to Bank as a transaction. The Bank Consortium replies with a go/no go reply telling if the transaction is ok.
9. Then money is dispensed
10. The Bank Card is returned.
11. The receipt is printed
12. The use case ends successfully

ATM Model: Withdraw Cash Use Case (cont)

5 Alternative Flows

5.1 Invalid User

If in step 2 of the basic flow Bank Customer the use case: Validate User does not complete successfully, then

1. the use case ends with a failure condition

5.2 Wrong account

If in step 8 of the basic flow the account selected by the Bank Customer is not associated with this bank card, then

1. The ATM shall display the message “Invalid Account – please try again”
2. The use case resumes at step 4

-
-
-

7 Post-conditions

7.1 Successful Completion

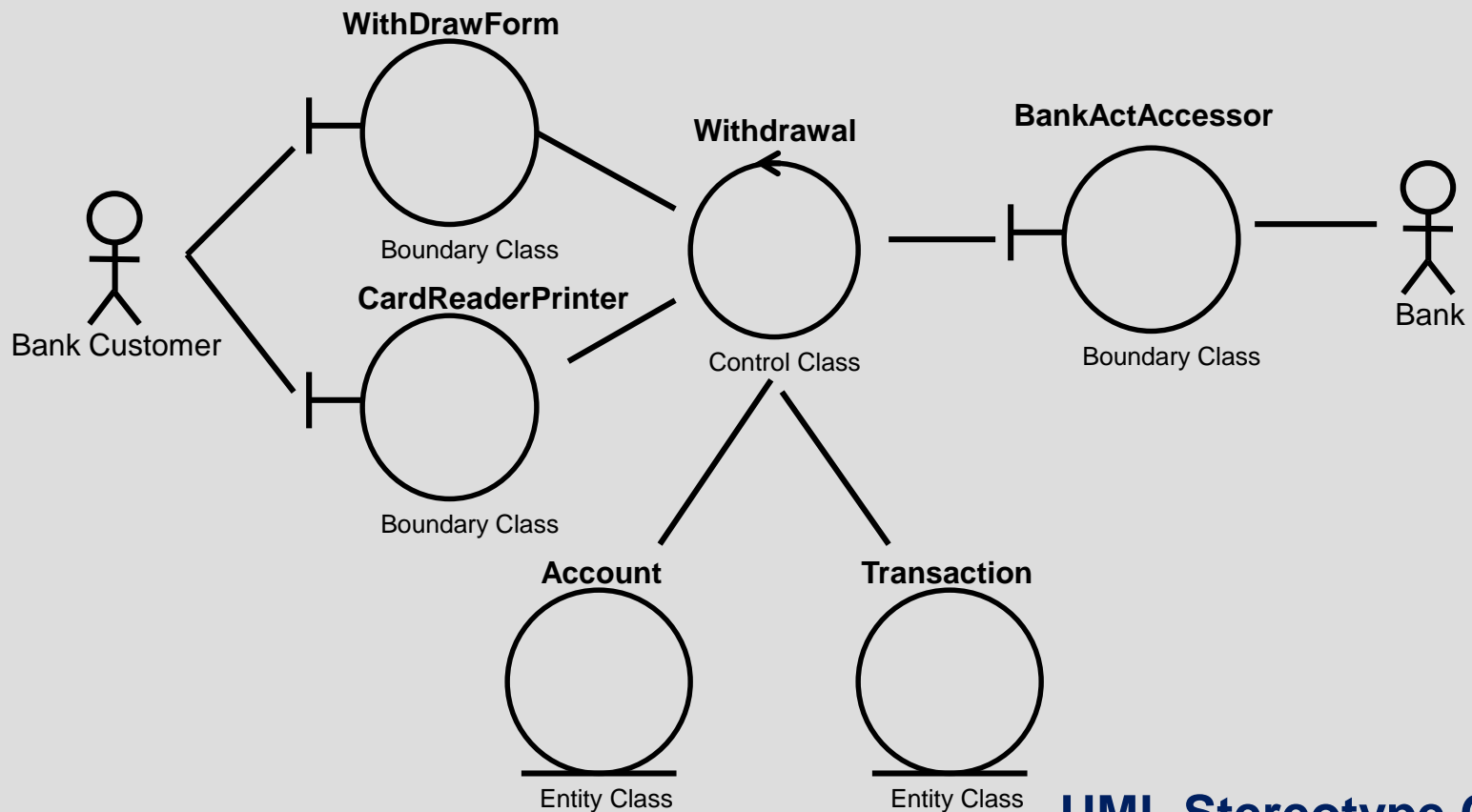
The user has received their cash and the internal logs have been updated.

7.2 Failure Condition

The logs have been updated accordingly.

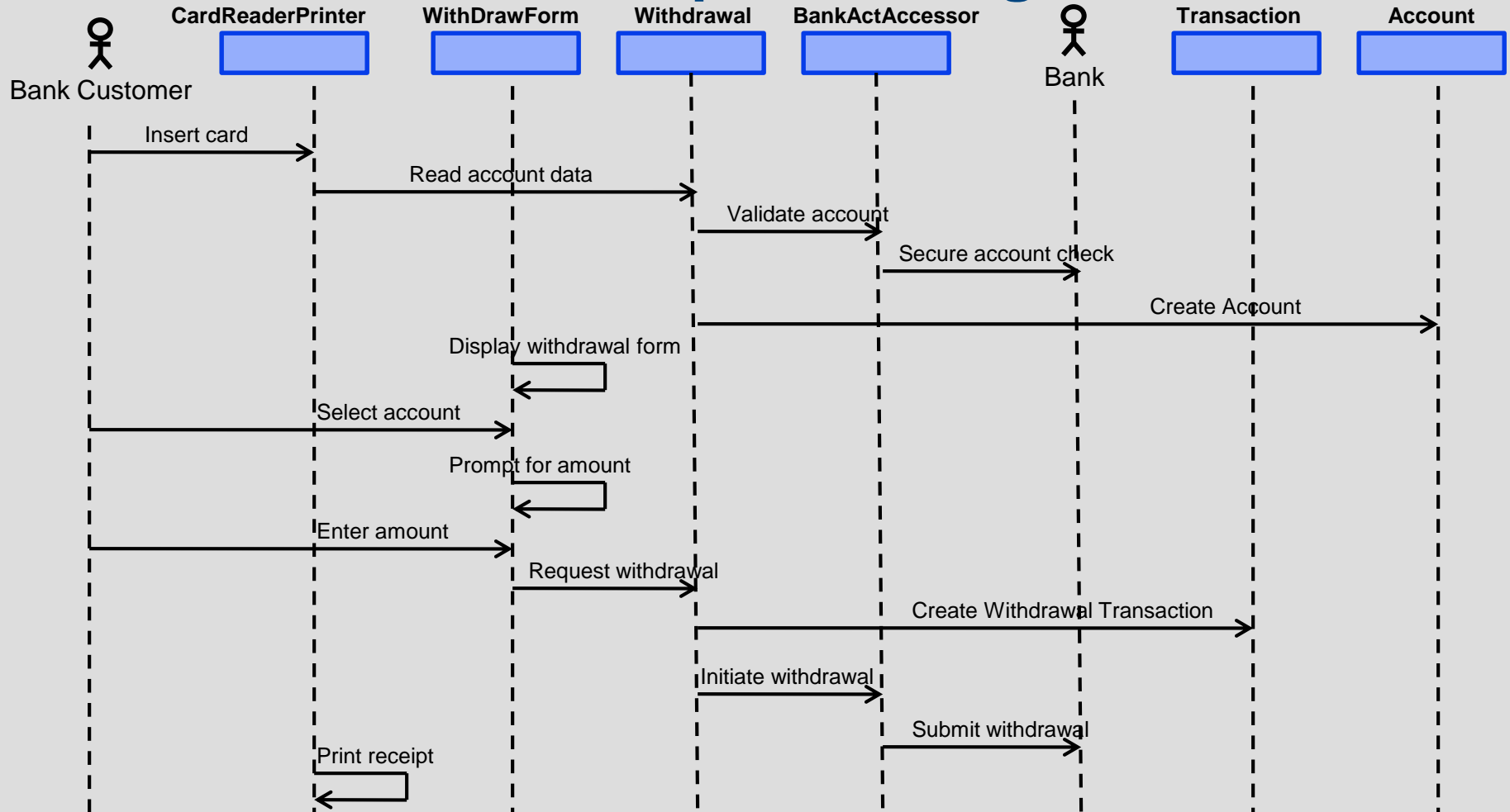
ATM Example – Analysis Classes

Use Case: Withdraw Cash



UML Stereotype Classes

ATM - Sequence Diagram



ATM – Communications Diagram with Responsibilities

